

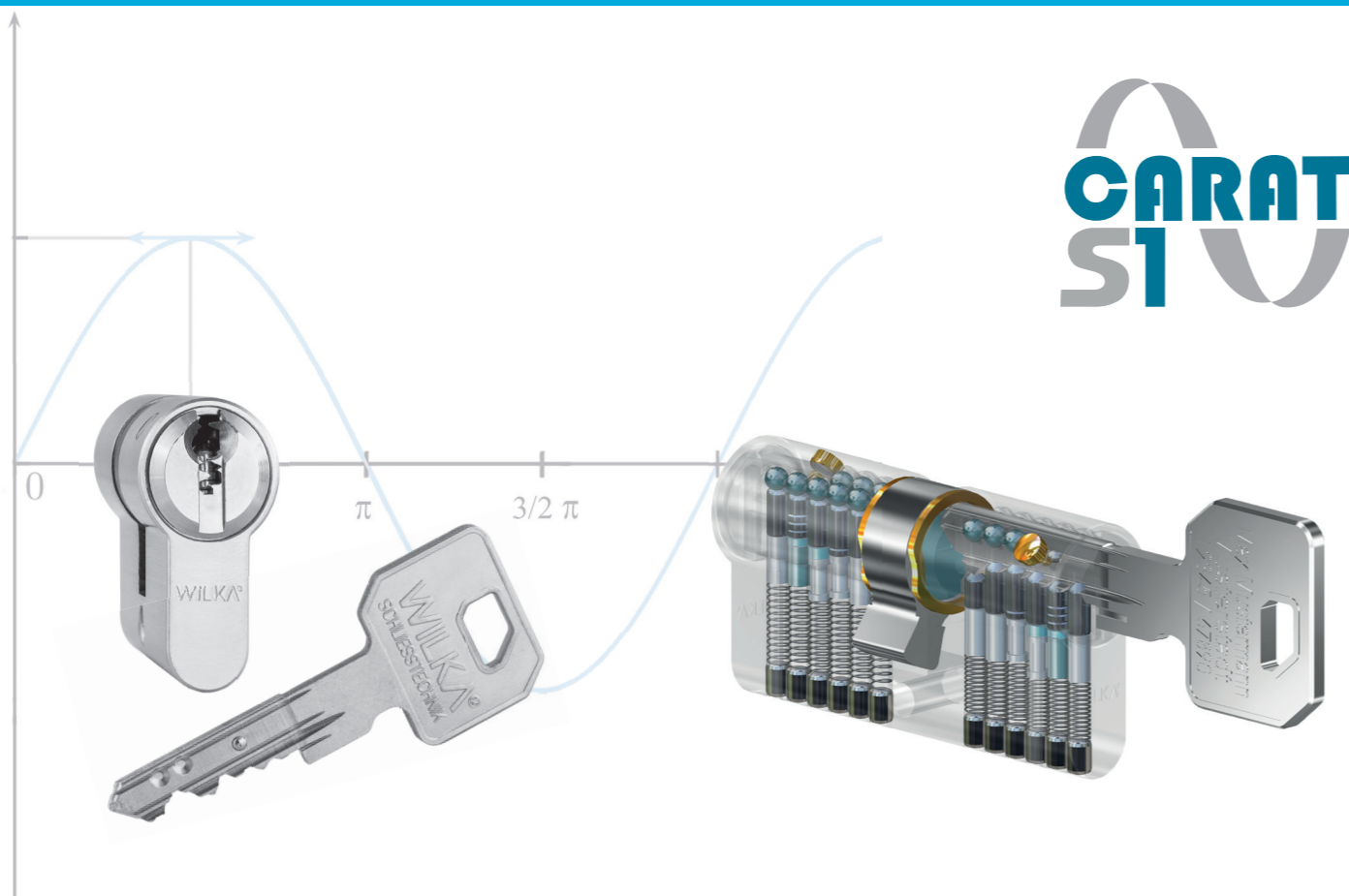
# WILKA

Mit Sicherheit gut



**Customer keyways**

Individual safety



## Technical data

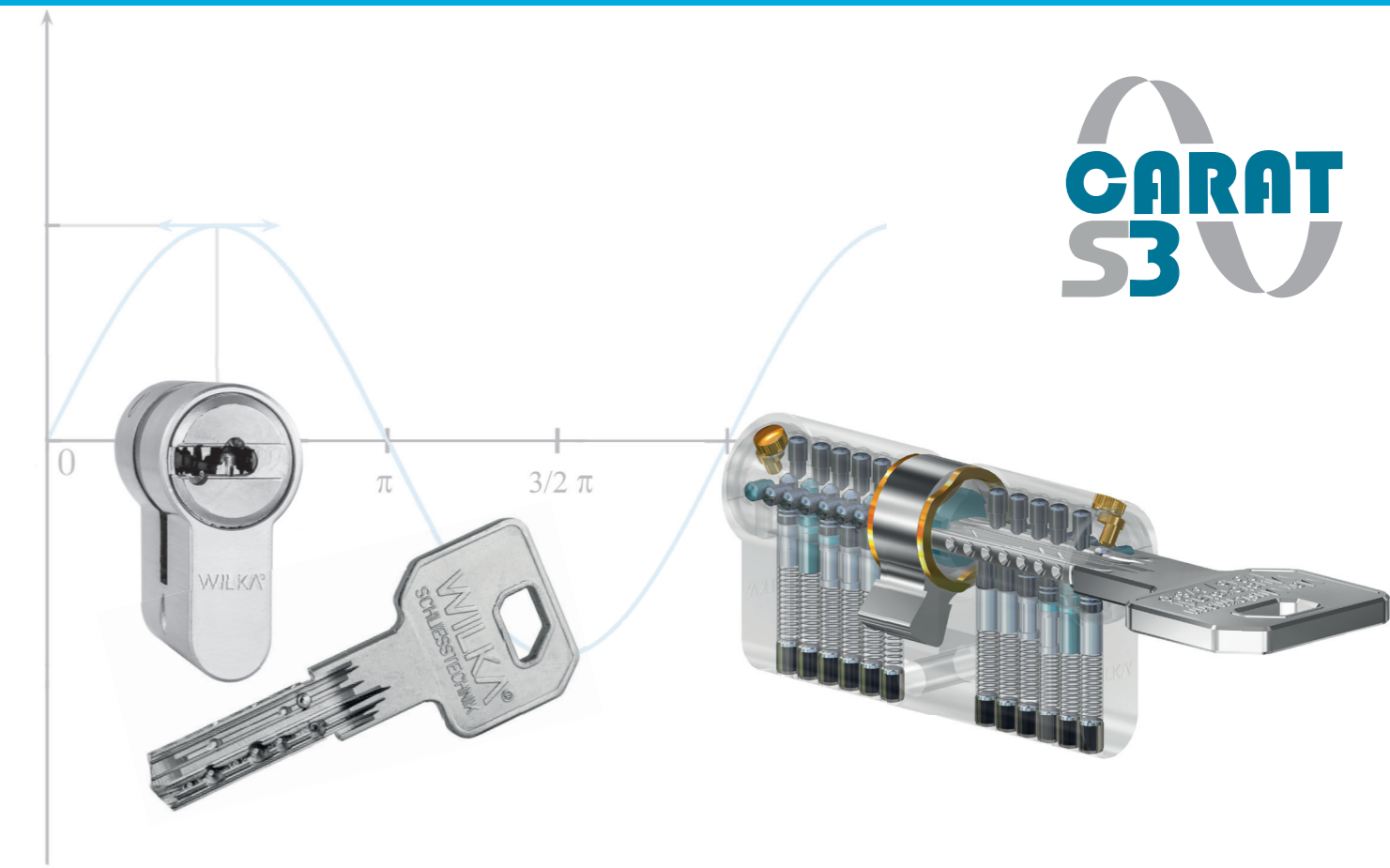
- > Cylinder according to DIN 18252 and EN 1303
- > 6 pin tumblers (from 30 mm)
- > 5 pin tumblers in short cylinders (26,5 mm) and asymmetric cylinders
- > Multiple patent protection
- > Special self-locking pin in the housing
- > Brass nickel-plated matt
- > Protector nickel-silver keys
- > Up to 8 additional profile control elements
- > Individual key stamp
- > M5 fixing screw
- > Optionally available in modular construction

## Special designs

- > Drilling protection (ABH) I, III or V
- > Hardened steel insert
- > Predetermined breaking points
- > Seawater resistant design
- > Hardwearing design.

## Your PLUS<sup>+</sup> for safety

- + Special pins to improve picking resistance
- + 1 housing pin made of hardened steel as drilling protection
- + Highest degree of copy protection due to protector pins on key and in cylinder core
- + Paracentric keyway against unauthorized opening with lock picking tools
- + New key design for use with common security fittings



## Technical data

- > Cylinder according to DIN 18252 and EN 1303
- > 6 pin tumblers (from 30 mm)
- > 5 pin tumblers in short cylinders (26,5 mm) and asymmetric cylinders
- > Multiple patent protection
- > Special self-locking pin in the housing
- > Brass nickel-plated matt
- > Protector nickel-silver keys
- > Individual key stamp
- > M5 fixing screw
- > New key design for use with common security fittings
- > Optionally available in modular construction

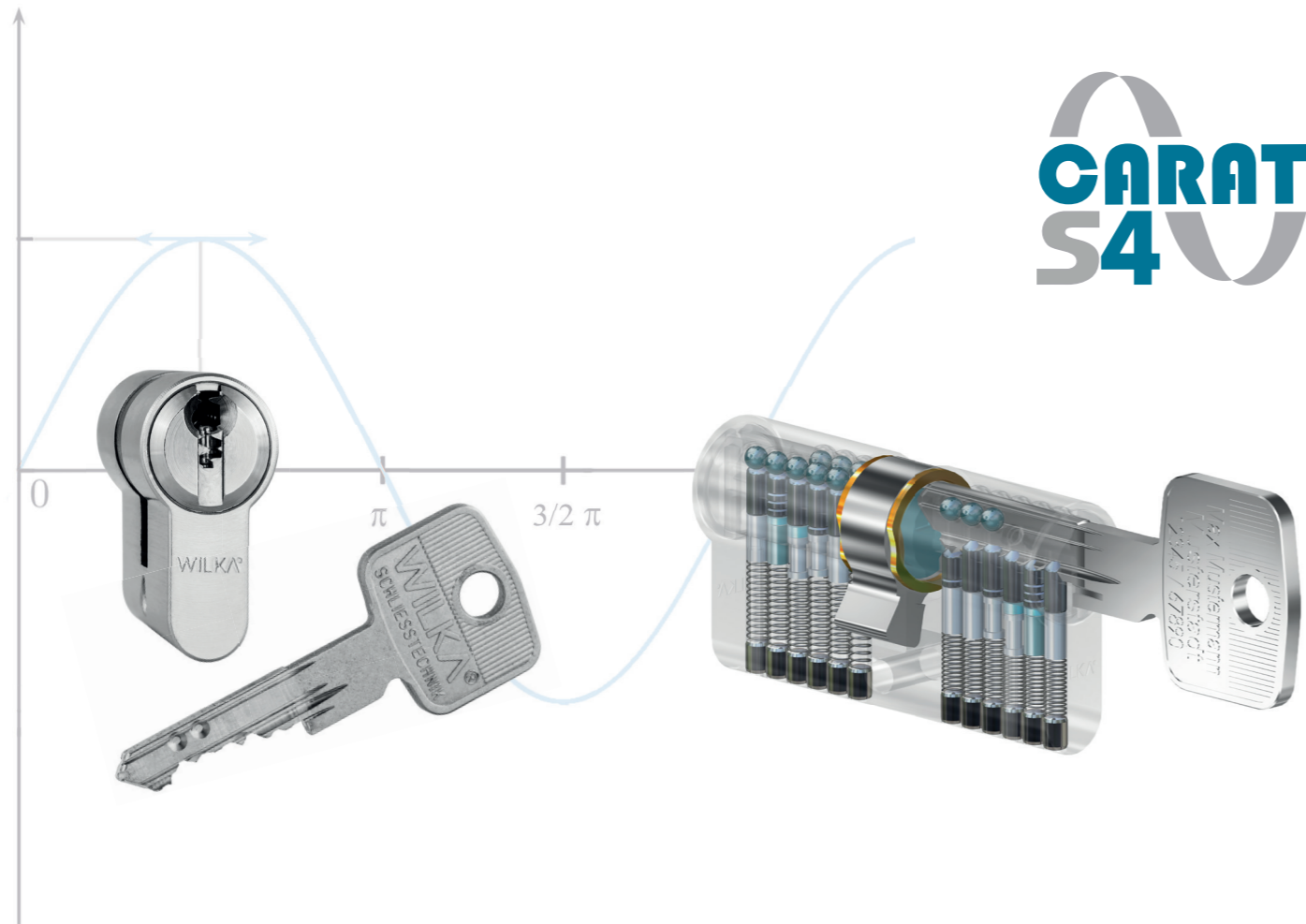
## Special designs

- > Drilling protection (ABH) IX or X
- > Hardened steel insert
- > Predetermined breaking points
- > Seawater resistant design

## Your PLUS<sup>+</sup> for safety

- + Special pins to improve picking resistance
- + Drilling protection due to 1 core and 1 housing pin made of hardened steel
- + Highest degree of copy protection due to protector pins on key and in cylinder core
- + Up to 12 profile control pins in two additional levels, 1 tracer pin made of hardened steel acting as drilling protection
- + Paracentric keyway against unauthorized opening with lock picking tools





## Technical data

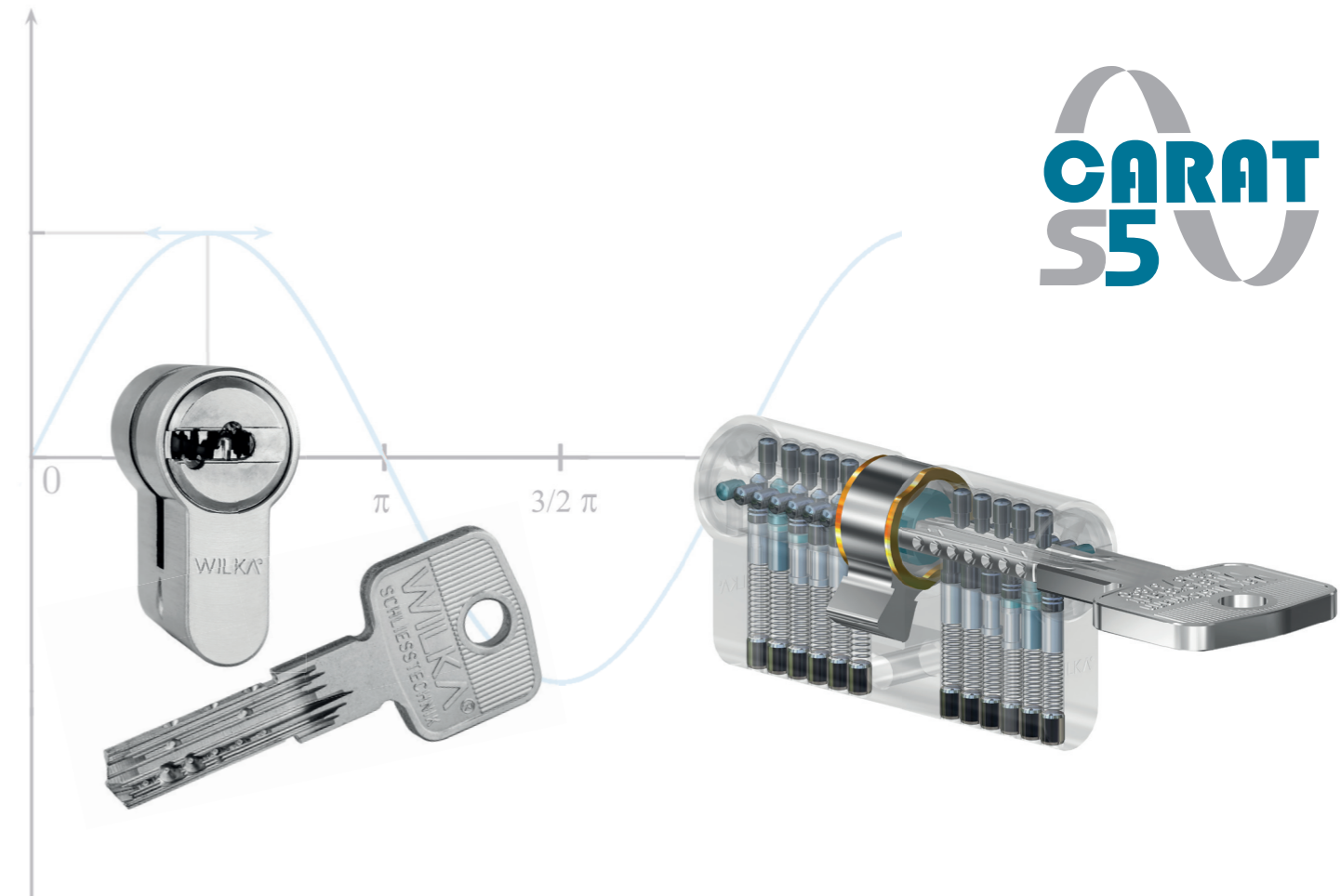
- > Cylinder according to DIN 18252 and EN 1303
- > 6 pin tumblers (from 30 mm)
- > 5 pin tumblers in short cylinders (26,5 mm) and asymmetric cylinders
- > Patent protection
- > Brass nickel-plated matt
- > Nickel-silver keys
- > Individual key stamp
- > Up to 8 additional profile control elements
- > M5 fixing screw
- > New key design for use with common security fittings
- > Optionally available in modular construction

## Special designs

- > Drilling protection (ABH) I, III or V
- > Hardened steel insert
- > Predetermined breaking points
- > Seawater resistant design
- > Hardwearing design

## Your PLUS+ for safety

- + Special pins to improve picking resistance
- + 1 housing pin made of hardened steel
- + Paracentric keyway against unauthorized opening with lock picking tools
- + Individual key stamp



## Technical data

- > Cylinder according to DIN 18252 and EN 1303
- > 6 pin tumblers (from 30 mm)
- > 5 pin tumblers in short cylinders (26,5 mm) and asymmetric cylinders
- > Patent protection
- > Up to 12 profile control pins in two additional levels, 1 tracer pin made of hardened steel acting as drilling protection
- > Paracentric keyway against unauthorized opening with lock picking tools
- > Brass nickel-plated matt
- > Nickel-silver keys
- > Individual key stamp
- > M5 fixing screw
- > New key design for use with common security fittings

## Special designs

- > Drilling protection (ABH) IX or X
- > Hardened steel insert
- > Predetermined breaking points
- > Seawater resistant design

## Your PLUS+ for safety

- + Special pins to improve picking resistance
- + Drilling protection due to 1 core and 1 housing pin made of hardened steel
- + Paracentric keyway against unauthorized opening with lock picking tools
- + Optionally available in modular construction





easyApp  
iOS®  
&  
Android®

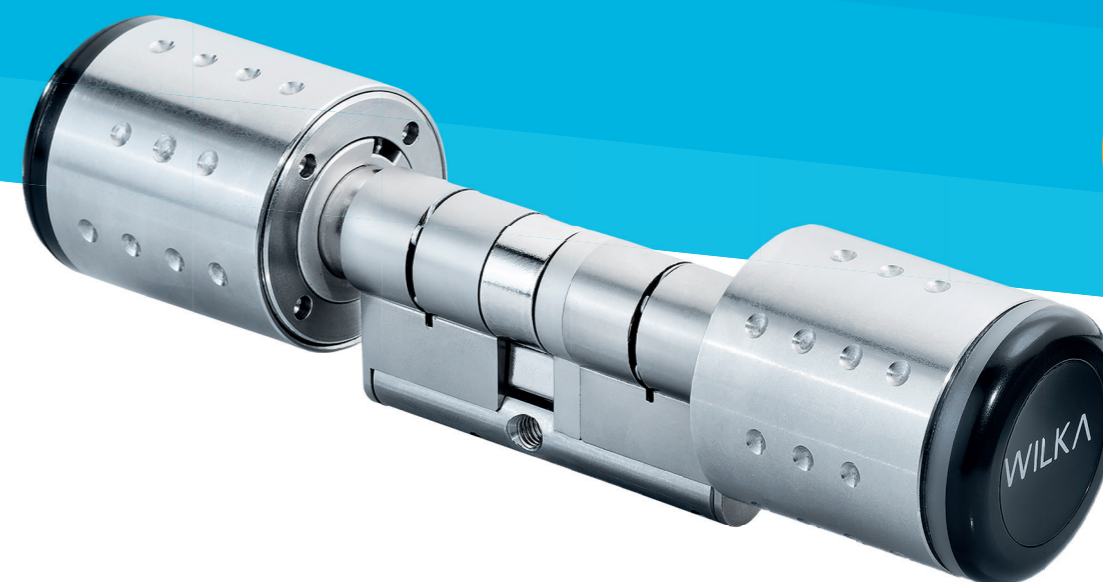
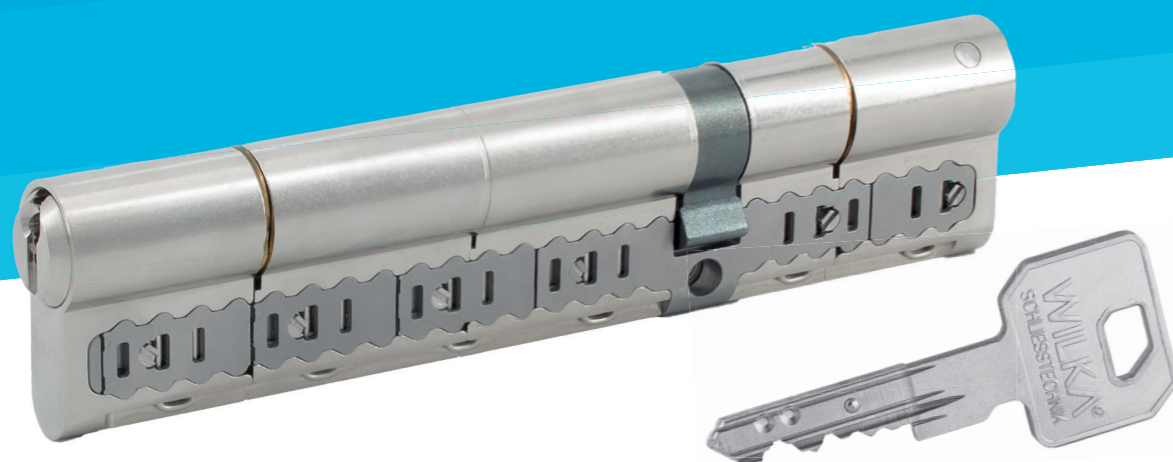


Image shows: 

### Individual adjustment to changing conditions

- > Adjustable at any time to new door thickness or function, with the least amount of effort
- > The length of the locking cylinder can be individually adjusted on-site to the existing door thickness, resulting in significant cost and time savings
- > Adjustment of the required length with just a few hand movements

### Technical data

- > In all keyways, available as half profile cylinder, double profile cylinder and knob profile cylinder
- > Basic half of the housing and core made of brass, housing extensions made of die-cast zinc or brass, bridge sections and core extensions made of stainless steel
- > Basic length 30/30 mm, on both sides extendable in steps of 5 mm to a maximum of 90/90 mm

\* Series 1900 (Vertical key)/3900 (Reversible key)

### Mechanics meets Electronics

The electronic access solutions from WILKA offer a variety of possible combinations.

Through different software packages and the large range of cylinder variants as well as handle-lock solutions, the locking system is individually tailored to the needs of the user.

All cylinder variants have a modular construction (excl. E201, E206 E214-E219) and meet the protection class IP67.

Image shows:

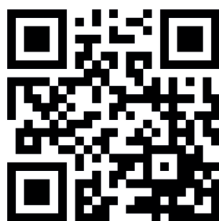


Image shows:





Mit Sicherheit gut



Your address here



**WILKA Schließtechnik GmbH**

Mettmanner Str. 58-64 · 42549 Velbert

[info@wilka.de](mailto:info@wilka.de) · [www.wilka.de](http://www.wilka.de) · [www.wilka.com](http://www.wilka.com)